

## FOCAL AREAS

### Eurobin Gullies

Connecting Mt Buffalo NP to Ovens River and across the Valley

**Actions:** *Work with landowners to protect remnant vegetation, revegetation and weed control*

### Mt Buffalo Connections

Threatened Swampy Riparian and depleted Riparian Forest EVC's; connecting the Buckland River and One Mile and Eurobin Creeks to the Ovens River and Mt Buffalo NP.

**Actions:** *Enhance remnant vegetation condition. Woody Weed control and revegetation, grazing management on public and private land*

### Bright Connections

Improving the Riparian environment abutting built up and heavily used areas around Bright, Germantown Streamside Reserve and German Creek confluence.

**Actions:** *Build community awareness of values along with woody weed control, maintain existing revegetation areas and deer protection trials; mostly on public land*

### Devils Creek Connection

Ecologically isolated area with connectivity potential across the Buckland Valley

**Actions:** *Work with private landholders on revegetation and weed control, grazing management, working with private landowners*

### Morses Creek

Quality riparian vegetation under threat from heavy use

**Actions:** *Work land managers and users to reduce impact along with woody weed control and revegetation*

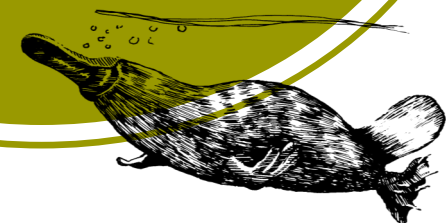
### Stony Creek

A narrow strip of depleted Riparian forest linking Alpine NP to the Ovens River and State Forest

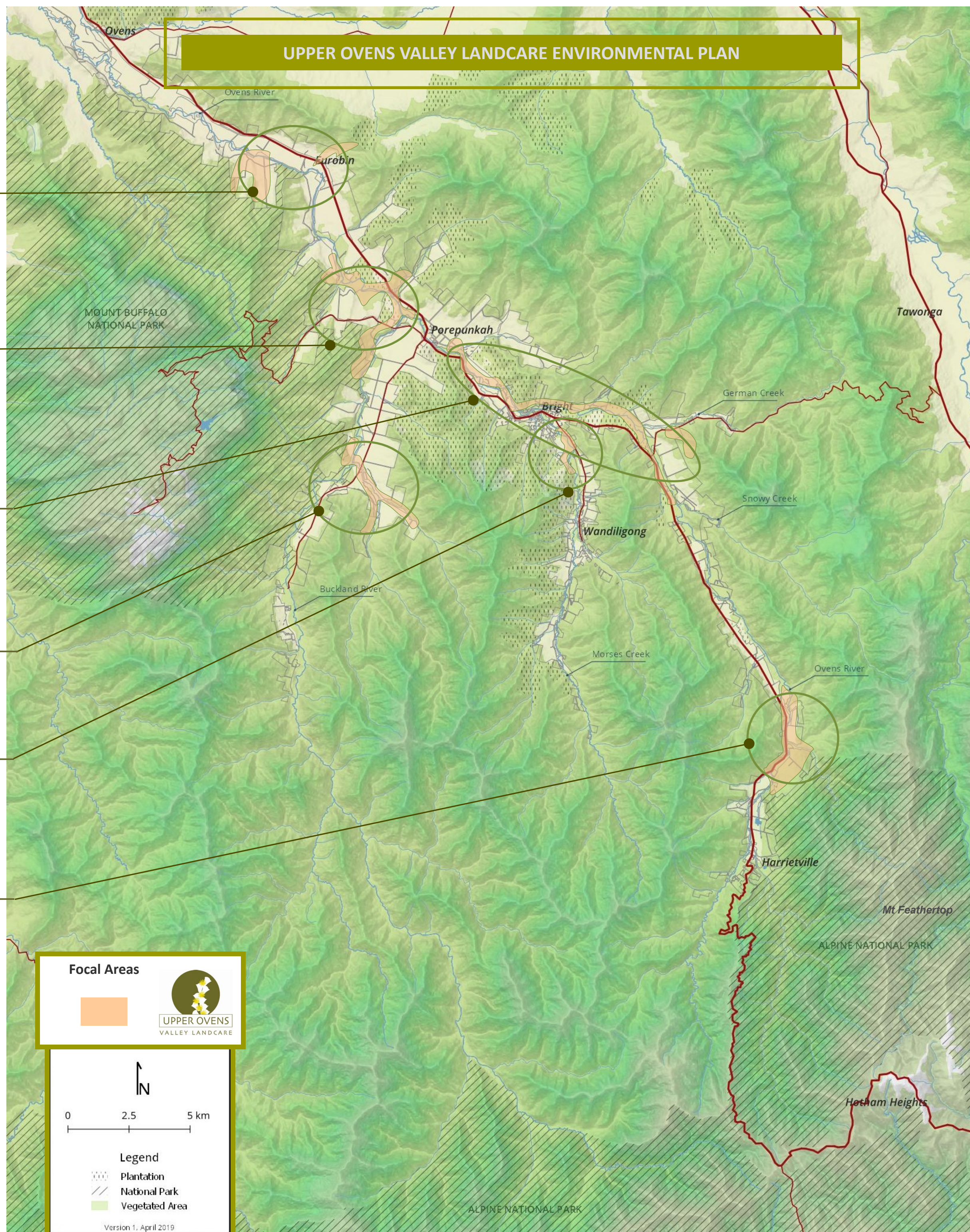
**Actions:** *Woody weed control, revegetation to widen riparian area, grazing management, remnant vegetation protection on both private and public land*

## Vision

*Riparian vegetation communities are diverse and resilient, protecting water quality for native fish and platypus and ensuring access and freedom of movement for wildlife along river corridors and across valleys.*



## UPPER OVENS VALLEY LANDCARE ENVIRONMENTAL PLAN



## KEY STRATEGIES: SUMMARY

### Working to protect environmental values from threats

- Weed control, revegetation and grazing management: mainly in Focal Areas on private and public land
- Engage with landowners to help them protect remnant vegetation
- Champion blackberry control and reduce deer impacts on revegetation

### Working to enhance environmental values

- Improve knowledge of biodiversity values including threatened species
- **Six Focal Areas** of highest environmental values identified to prioritise where we work
- Seek new funding for focal areas and to maintain previous works

### Monitoring, evaluating, and learning

- Learn by doing: assess successes and failures as we go to develop best practice
- Maintain good records of past and present works and monitor and record

### Generating awareness in the community

- Promote the Platypus as a champion species indicating healthy Platypus = healthy environment
- Promote Landcare through market stalls, publications and interpretive activities

### Working with others to maximise benefits and efficiencies

- Strengthen co-operation through a Conservation Management Network for the Upper Ovens
- Work closely with private landowners and public land managers to improve vegetation condition